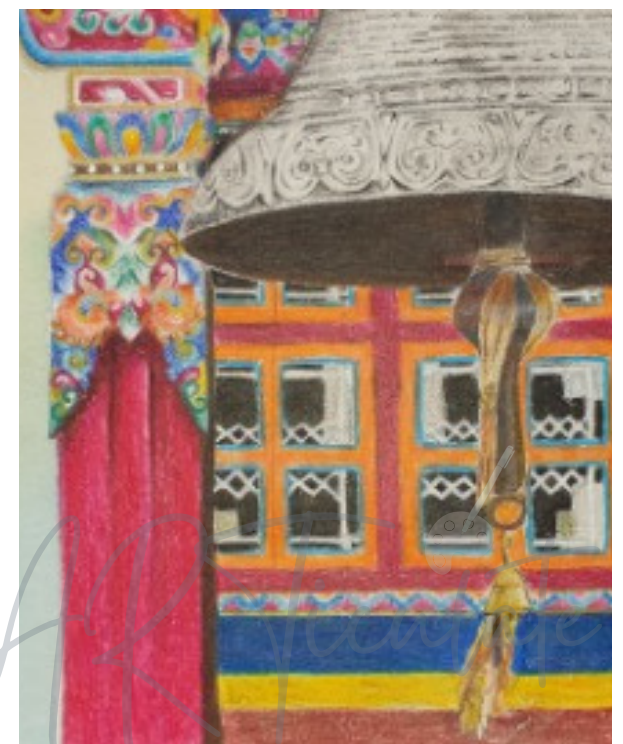
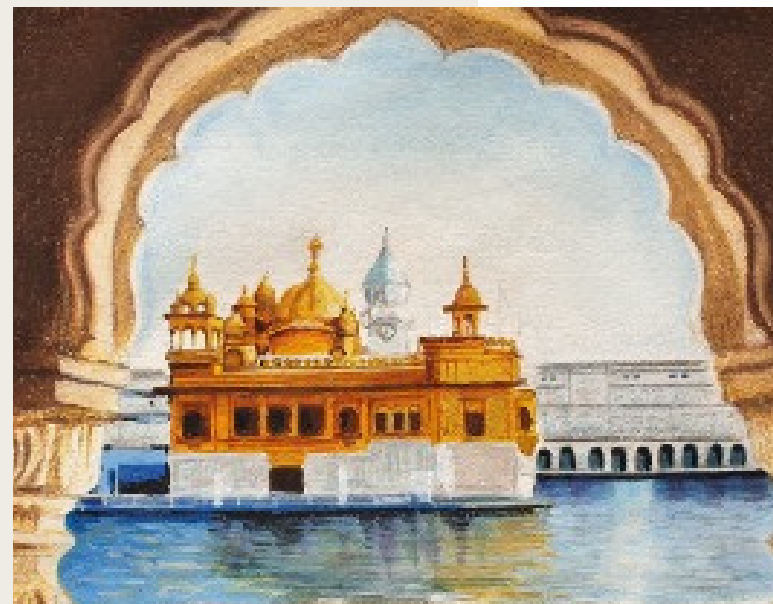
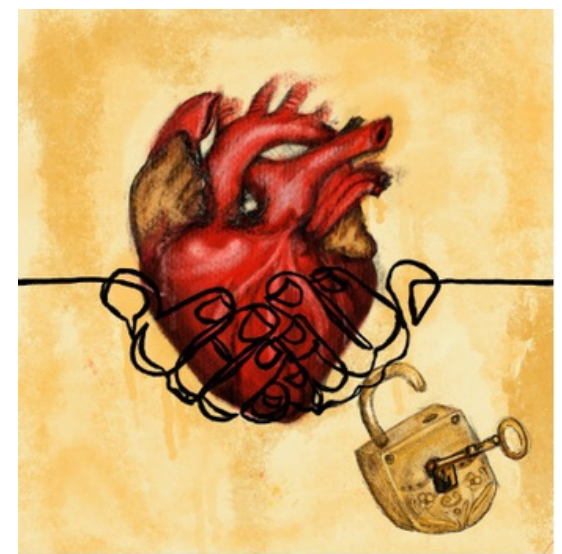
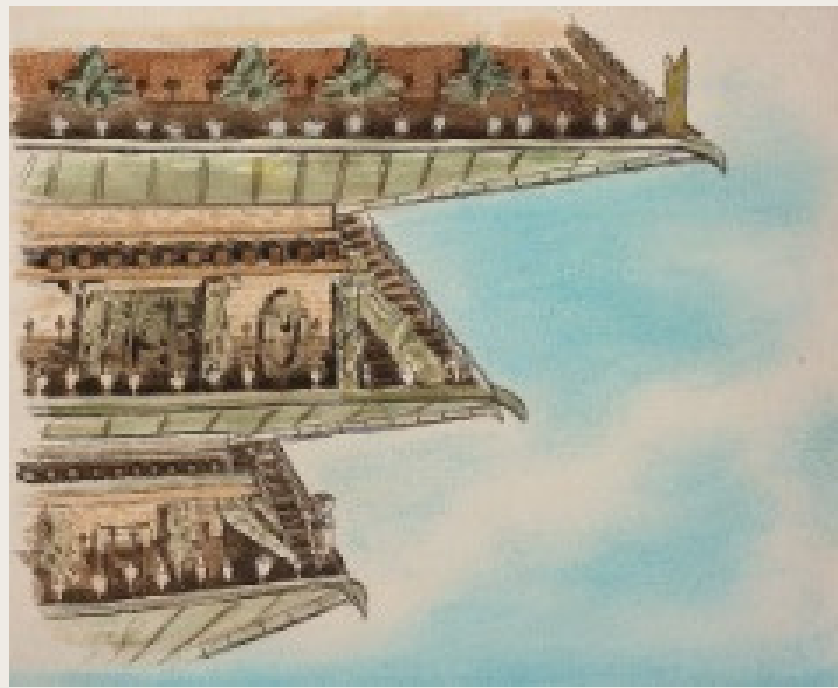
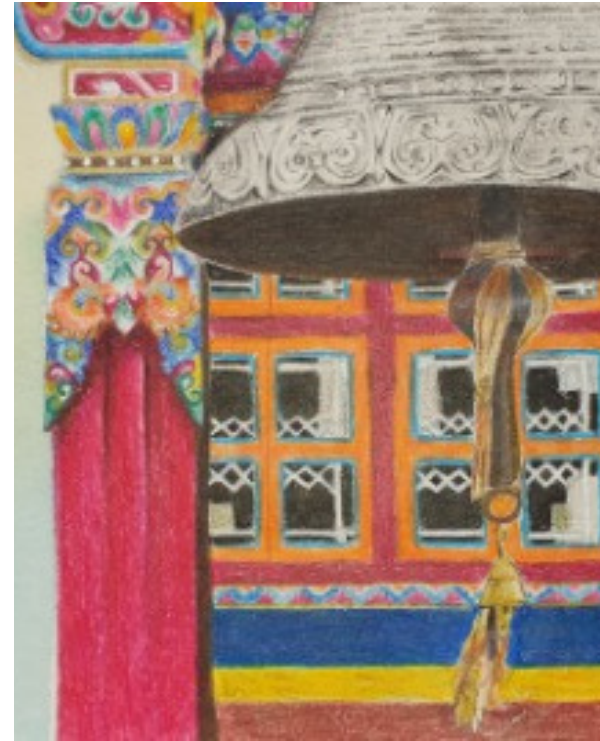
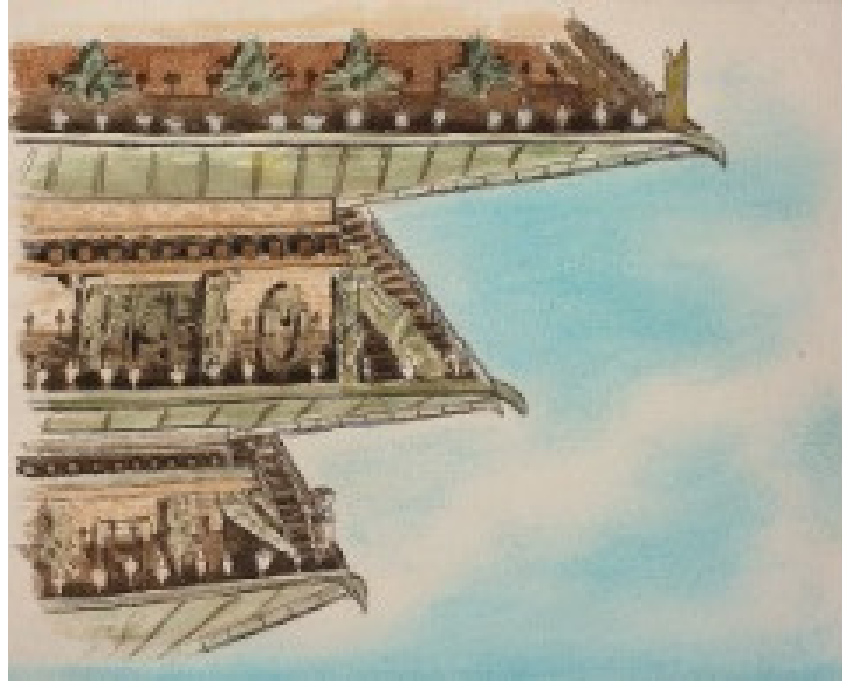


# Student Portfolio



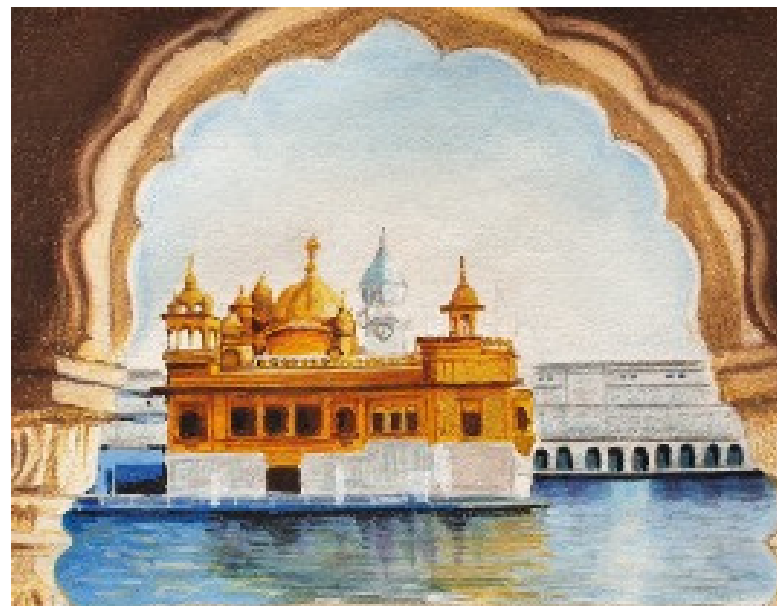


Strengths and Impact



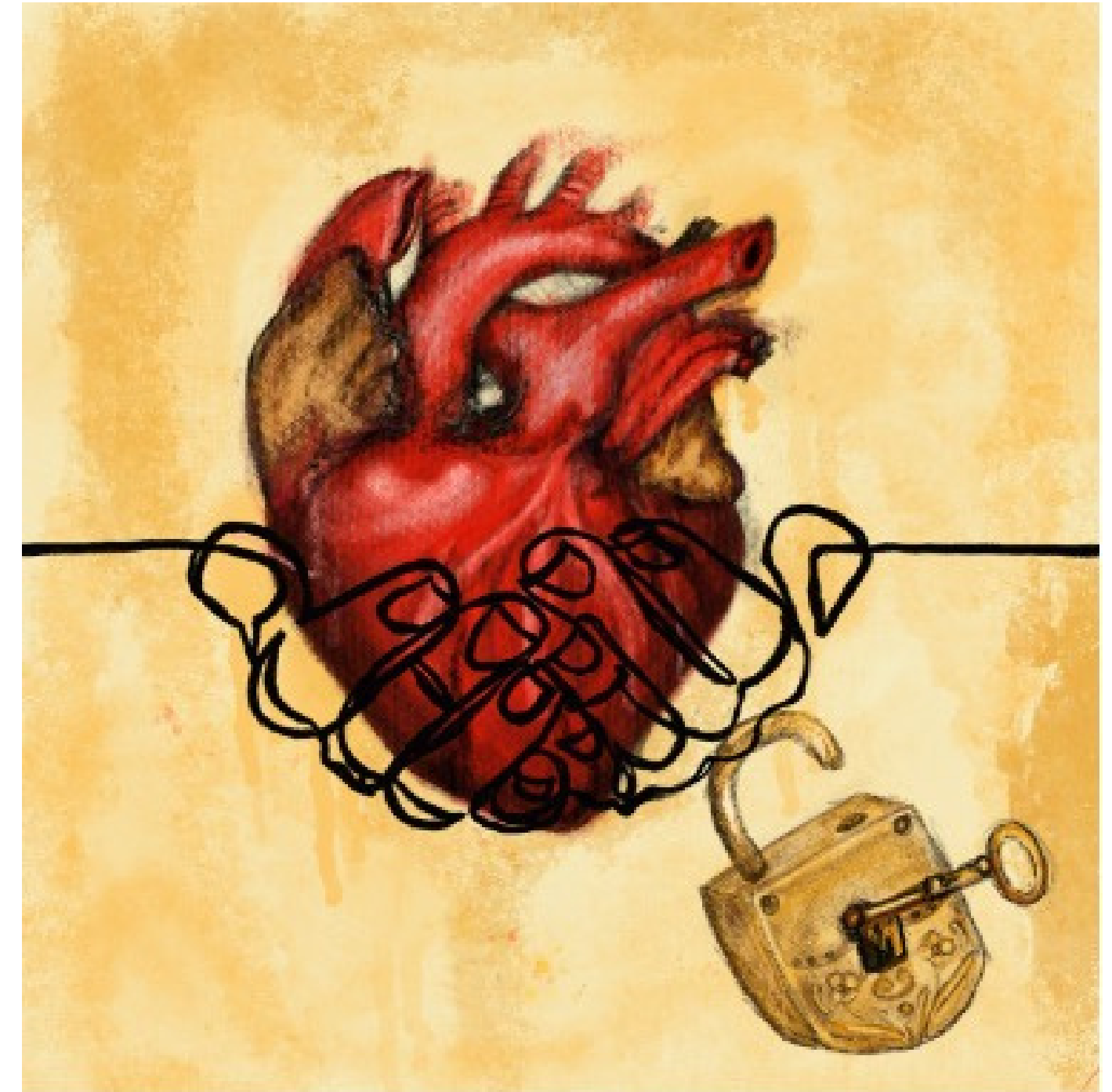
# Culturally Relevant

These works showcase the student's deep engagement with their Nepalese and Indian heritage, reflecting a strong cultural narrative. Through intricate depictions of architecture, traditions, and everyday life, they create a visual connection to their roots, enriching their storyboard with personal and cultural authenticity.



# Emotional Impact

This work, when viewed alongside the student's Parsons Challenge submission, offers the admissions team great insight into the student's familial and emotional connections, painting a picture of who they are beyond their application. It underscores the depth of their personal narrative and their ability to channel intimate experiences into artistic expression. The strongest and most compelling artworks often emerge from deep emotional introspection, as they are authentic and display an understanding of the human experience.



ARTiculate

Areas of Improvement



Could Add More Drama

The exploration of "shabby chic" design elements is a strong starting point, but the overall execution could benefit from greater dramatic flair. The dress designs could incorporate bolder and more intricate elements, such as exaggerated silhouettes, layered textures, or ornate embellishments, to fully embrace the aesthetic's potential. Drawing inspiration from specific time periods, such as Victorian or Edwardian fashion, could provide a historical context to enrich the designs. This approach would not only add depth but also create a more cohesive connection between the mood board and the final creations.



# Articulate



## Lacking Precision

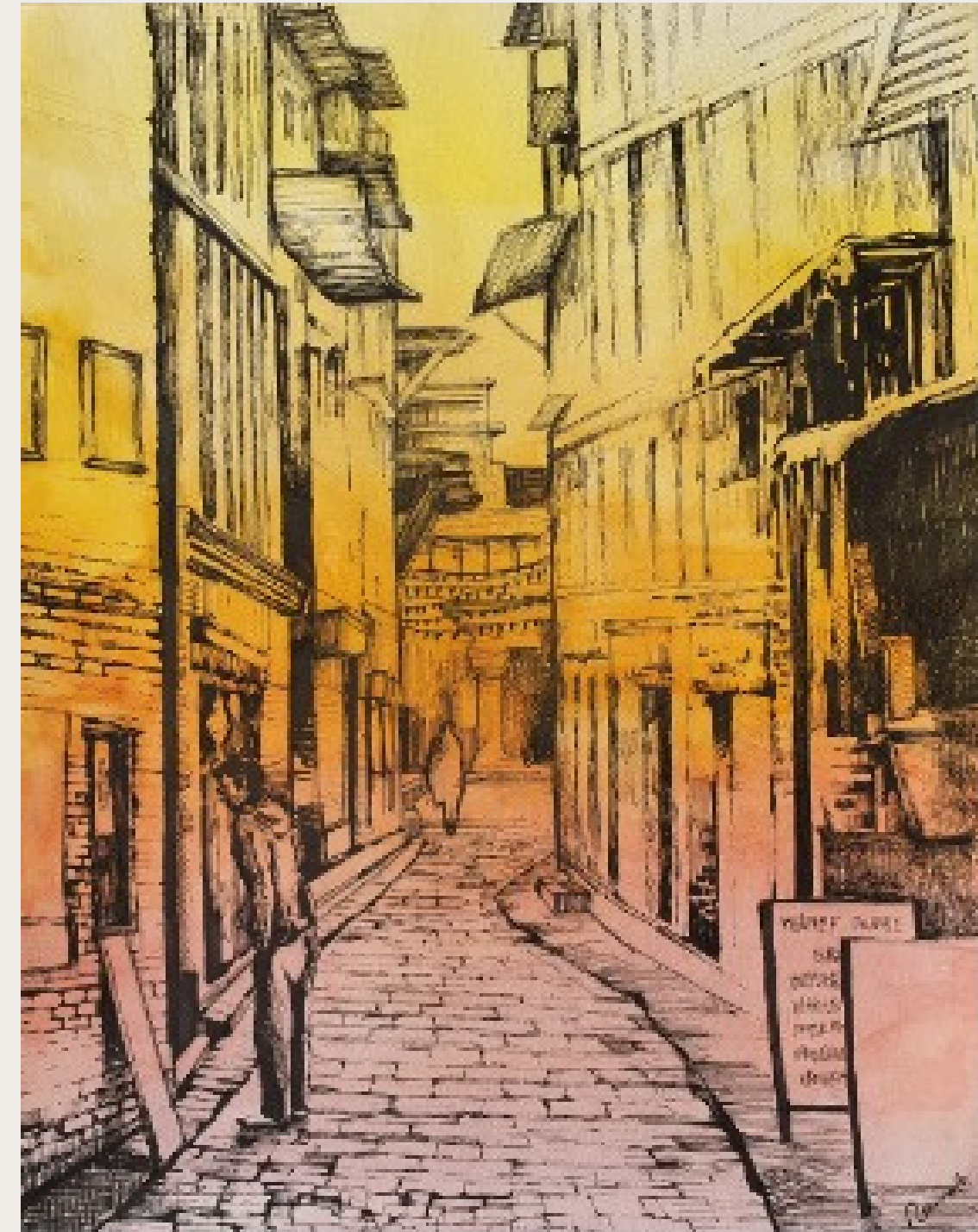
While this piece is an example of observational drawing and a valuable addition to your portfolio, it could benefit from a closer focus on the principles of detailed observation. Observational drawing emphasizes capturing intricate details and textures with accuracy. In this work, elements such as the bricks, windows, and doors lack the refined detail and precision that reflect a deep and meticulous study of the subject. Enhancing these aspects would elevate the technical strength and realism of the piece, showcasing a more thorough engagement with the observational process.

Strategic Enhancements



# Enhancing Atmosphere

This is an excellent piece that demonstrates strong technical skill and a keen eye for composition. To further enhance its impact, inspiration could be drawn from Van Gogh's urban scenes, such as *Café Terrace at Night*. Incorporating more dynamic elements, such as expressive linework, vibrant color contrasts, and a greater play of light and shadow, could add energy and emotion to the scene. This approach would enrich the atmosphere and imbue the artwork with a sense of movement and vibrancy, making it even more engaging and evocative.



ARTiculate



# Infusing Tradition with Modernity

This work effectively captures *the essence of a traditional thangka* painting and conveys meaningful themes. To enhance its impact, additions such as more intricate symbolic details, a refined colour palette aligned with traditional *thangka* symbolism, and a stronger integration of the prayer flags into the composition could create a deeper connection to the cultural and spiritual roots of the style. Additionally, taking inspiration from Indian artist S.H. Raza's exploration of geometric forms and vibrant, symbolic colours could help infuse the work with greater energy and modern relevance while maintaining its traditional foundation.

ARTiculate